

Bug Reports

[NEWTOPIC*](#)

15 topics • Page 1 of 1

TOPICS	REPLIES	VIEWS	LAST POST
 Previous Image Cleared if Images are Different Aspect Ratio by MDennison » 18 Aug 2012, 03:08	1	3215	by mhieta  18 Aug 2012, 11:41
 Opening SEARCH module from VIEWER by TrevC » 03 May 2011, 12:25	5	3083	by mhieta  05 May 2011, 08:36
 All portable zip files seem corrupted by iderdik » 03 Jan 2011, 19:18	4	1430	by mhieta  03 Jan 2011, 19:41
 5.7 windows 7 by pjotrw » 04 Apr 2010, 22:00 	11	3943	by mhieta  05 Apr 2010, 20:17
 File Open/Save bug with v5.6 & later on Windows98SE by Spiffy » 08 Feb 2010, 00:11	3	1589	by mhieta  23 Feb 2010, 17:33
 Full screen display in dual monitor mode by heronwil » 17 Sep 2009, 00:16	8	4424	by mhieta  22 Sep 2009, 20:13
 Zoom-Error with automatic Monitor-Selection by simon » 17 Apr 2009, 15:12	4	1954	by mhieta  18 Apr 2009, 14:29
 Error with Right click context menu with Windows 7 by Rich » 10 Mar 2009, 22:55	9	3038	by mhieta  13 Mar 2009, 19:54
 Windows - No Disk Error message on starting Viewer by jeremygharrison » 28 Jan 2008, 00:00 	20	9728	by mhieta  09 Mar 2008, 15:15
 Multipage-tif frame-navigation not working in Full-Screen view by oldie » 07 Jan 2008, 23:48	9	3928	by mhieta  14 Jan 2008, 17:25
 XMP information disappears by hcipbs » 25 Aug 2007, 18:36	3	2305	by mhieta  27 Aug 2007, 18:20
 Rotate direction by Midstream » 02 Jul 2007, 16:10	2	2302	by mhieta  03 Jul 2007, 18:14
 Start and end of show in 4.9 beta 2.0 by Midstream » 07 Jun 2007, 16:52 	22	8127	by mhieta  12 Jun 2007, 15:22
 Shortcut icon by Midstream » 06 Jun 2007, 19:24	4	2320	by mhieta  07 Jun 2007, 14:16
 Editor - No tooltips by hcipbs » 19 Dec 2006, 16:55	2	1888	by mhieta  05 Jan 2007, 15:04

 Display topics from previous: [All Topics](#) Sort by [Post time](#) [Descending](#)
[NEWTOPIC*](#)

15 topics • Page 1 of 1

[Return to Board index](#)

 Jump to: [Bug Reports](#)

Previous Image Cleared if Images are Different Aspect Ratio

POSTREPLY ↩

2 posts • Page 1 of 1

Previous Image Cleared if Images are Different Aspect Ratio

 by [MDennison](#) » 18 Aug 2012, 03:08

I like to have the current image fade out as the next image fades in. So I've unchecked the "Clear Previous Image" box. This works great **unless** the next image is a different aspect ratio. Any work arounds for this so that all images fade out regardless of the aspect ratio of the next image.

I first noticed when going transitioning from Landscape to Portrait images. So I was curious if it had to do with using the EXIF data to auto rotate the image. So first I scaled an image from full resolution down to fit the HD screen with the same aspect ratio. I turned display image info on so I could see when the two images changes as SlideShow automatically scaled the full resolution down to fit the screen so there was no visual indication that the image changed. I then cropped a 4:3 image to 16:9 and put them both in the same directory. The current image is cleared before the next image starts appearing.

Thanks,
Mike

MDennison

Member

Starting...

Posts: 3

Joined: 12 Aug 2012, 00:34

Re: Previous Image Cleared if Images are Different Aspect Ra

 by [mhieta](#) » 18 Aug 2012, 11:41

Hi Mike,

Unfortunately component what I use for Slide Show image drawing/transitions is not allowing to do otherwise. So currently its by design.

hmm. What about if you make Custom Show. Then you can have Landscape images first and then Portrait images. Also in Custom Show you can change background color for each image.

But if you want to display images in specific order then those Landscape and Portrait images will mix up.

- Marko


mhieta

Developer

Super Mod

Posts: 567

Joined: 15 Oct 2005, 21:53

Location: Lohja, Finland


 Display posts from previous: [All posts](#) Sort by [Post time](#) [Ascending](#)

POSTREPLY ↩

2 posts • Page 1 of 1

[Return to Bug Reports](#)

 Jump to: [Bug Reports](#)
WHO IS ONLINE

Opening SEARCH module from VIEWER

[POSTREPLY](#)

6 posts • Page 1 of 1

Opening SEARCH module from VIEWER

 by [TrevC](#) » 03 May 2011, 12:25

 REF : Wildbit Viewer V. 5.8 (downloaded and installed today 3rd May 2011)

 =====

Although I can open the SEARCH module directly by double clicking the Search.exe file from the installation directory, I cannot open it from the VIEWER module using Tools/Search nor CTRL+F.

Can anyone please confirm if this is a known bug or if I am doing something incorrectly?

With thanks.

TrevC

TrevC

Member

[Starting...](#)

Posts: 3

Joined: 03 May 2011, 12:15

Re: Opening SEARCH module from VIEWER

 by [mhieta](#) » 04 May 2011, 05:08

Hi TrevC and Welcome,

Are you running Viewer as portable? Please check that Search.exe is on the same folder where Viewer.exe is.

- Marko


mhieta

Developer

[Super Mod](#)

Posts: 567

Joined: 15 Oct 2005, 21:53

Location: Lohja, Finland



Re: Opening SEARCH module from VIEWER

 by [TrevC](#) » 04 May 2011, 11:51

Hi Marko

Thank you for your reply.

I didn't specifically download the portable version but I have downloaded and unzipped the .zip file version which unzips all files into one folder. I've also downloaded and installed the .exe file version which installs in Program Files. In both cases, the search.exe and viewer.exe files are in the same folder but search.exe does not launch from the viewer/tools/search menu option in either case.

Regards

TrevC

Member

[Starting...](#)

Posts: 3

Joined: 03 May 2011, 12:15

Trevor



Re: Opening SEARCH module from VIEWER

by **mhieta** » 04 May 2011, 13:58

Hi Trevor,

hmm. What happens if you click Editor button? Does Editor program open?
And what is the full path where you installed/unzipped Viewer.exe and Search.exe?

- Marko



mhieta
Developer

Super Mod

Posts: 567
Joined: 15 Oct 2005, 21:53
Location: Lohja, Finland



Re: Opening SEARCH module from VIEWER

by **TrevC** » 05 May 2011, 07:54

Hi Marko

I think that I may be losing my mind.

This morning I opened Wildbit (the Program files version) in order to check that the Editor module opens (which it does).

So I tried the search option again and this time the search module DID open.

I then opened the unzipped version and tried opening search and this DID open also.

I don't know what has happened since yesterday but everything now seems to be working!

I'm so sorry to have wasted your time and thank you for your help and patience.

Regards
Trevor

TrevC

Member

Starting...

Posts: 3
Joined: 03 May 2011, 12:15



Re: Opening SEARCH module from VIEWER

by **mhieta** » 05 May 2011, 08:36

Hi Trevor,

Both Editor and Search buttons tries to solve if exes are found where the Viewer.exe is. If that fails then also those programs won't open. If they are found where the Viewer.exe is then both are executed with ShellExecute+parameters. So either that checkup failed or that ShellExecute failed in your case 😊 But anyway I'm glad that it now works okay. 🍻

- Marko



mhieta
Developer

Super Mod

Posts: 567
Joined: 15 Oct 2005, 21:53
Location: Lohja, Finland



Display posts from previous: All posts Sort by Post time Ascending

POSTREPLY ↩

6 posts • Page 1 of 1

Return to Bug Reports

Jump to: Bug Reports

All portable zip files seem corrupted

POSTREPLY ↩

5 posts • Page 1 of 1

All portable zip files seem corrupted

by **iderdik** » 03 Jan 2011, 19:18

I've tried unzipping them with Windows 7 and 7-zip with no success. Can you please update them if possible? Thanks!

iderdik
Member

Starting...

Posts: 4
Joined: 03 Jan 2011, 19:17

Re: All portable zip files seem corrupted

by **mhjeta** » 03 Jan 2011, 19:29

Hi iderdik,

What version you are trying to unzip?

Here is 5.9 Alpha 2.0 version tested with 7-zip (9.20 x64 version) and with Windows 7 (x64).

- Marko



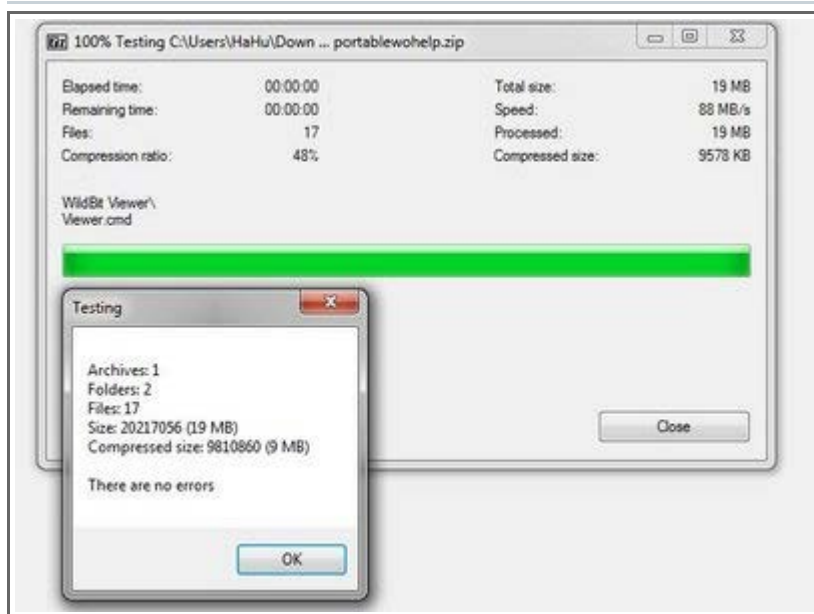
mhjeta
Developer

Super Mod

Posts: 567
Joined: 15 Oct 2005, 21:53
Location: Lohja, Finland



ATTACHMENTS



Re: All portable zip files seem corrupted

by **iderdik** » 03 Jan 2011, 19:33

I was trying the 5.8 versions found here: <http://www.wildbit-soft.fi/software.html>

I'll give 5.9 a try.

iderdik
Member

Starting...

Posts: 4
Joined: 03 Jan 2011, 19:17

Edit: 5.9 worked!! Thanks!



Re: All portable zip files seem corrupted

by [mhieta](#) » 03 Jan 2011, 19:40

Hi,

With 5.8 version.

- Marko



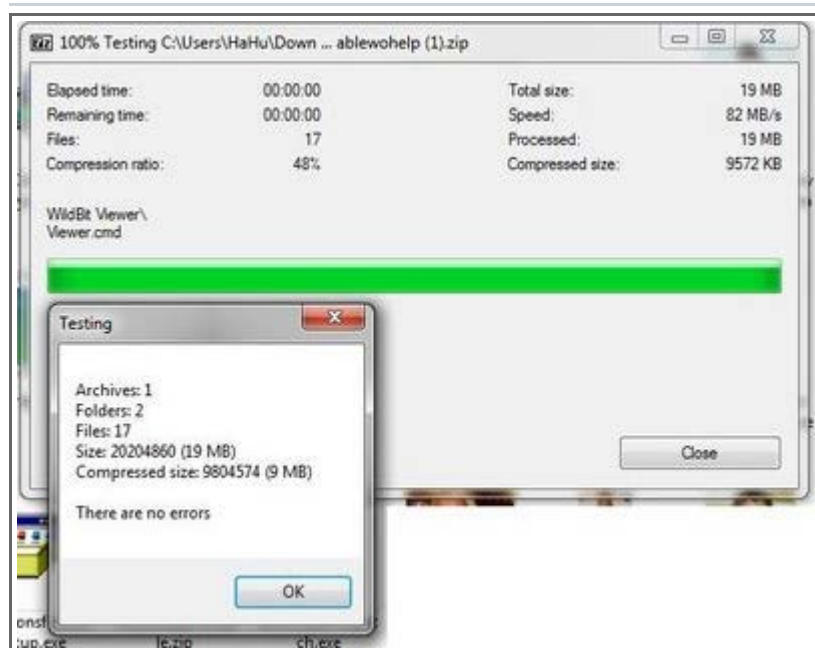
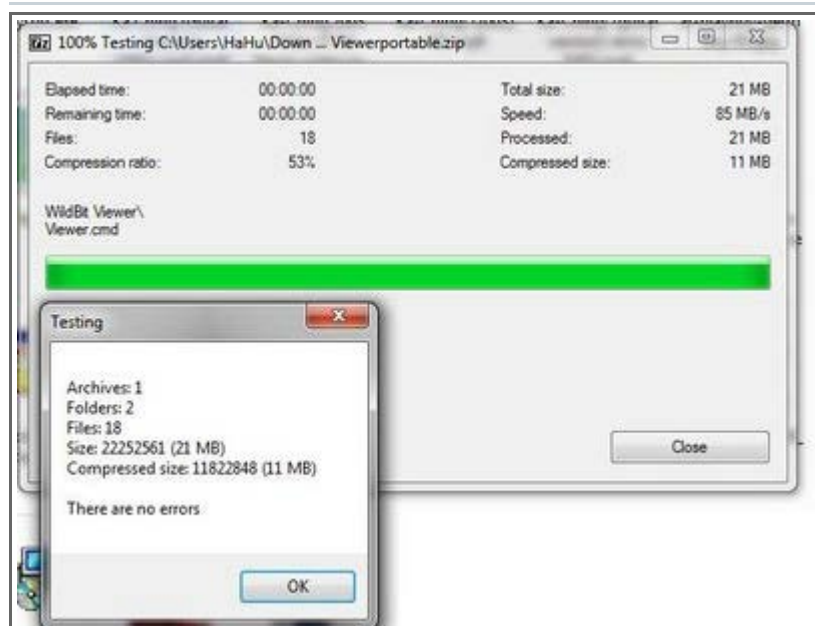
mhieta
Developer

Super Mod

Posts: 567
Joined: 15 Oct 2005, 21:53
Location: Lohja, Finland



ATTACHMENTS



Re: All portable zip files seem corrupted

by [mhieta](#) » 03 Jan 2011, 19:41

Hi,

Ok 😊

- Marko

mhieta
Developer
Super Mod

Posts: 567
Joined: 15 Oct 2005, 21:53
Location: Lohja, Finland

Display posts from previous: **All posts** Sort by **Post time** **Ascending**

POSTREPLY ↩

5 posts • Page 1 of 1

Return to Bug Reports

Jump to: **Bug Reports**

WHO IS ONLINE

Users browsing this forum: No registered users and 1 guest

[Board index](#)

[The team](#) • [Delete all board cookies](#) • All times are UTC

Powered by [phpBB®](#) Forum Software © phpBB Group

5.7 windows 7

POSTREPLY ↩

 12 posts • Page 1 of 2 • [1](#) [2](#)

5.7 windows 7

 by [pjotr](#) » 04 Apr 2010, 22:00

Hi Marko,

In slideshow ctrl-b (for the controlbox) doesn't seem to work in Windows 7. I just got a new laptop with Windows 7 and I'm trying to migrate all my favorite programs.

Greetings
Pjotr

[pjotr](#)

Member

Starting...

Posts: 5

Joined: 04 Apr 2010, 21:57

Re: 5.7 windows 7

 by [mhieta](#) » 04 Apr 2010, 23:52

Hi Pjotr and Welcome,

hmm. Do you have some software running what takes control with ctrl+b ? Or is there specific situation when ctrl+b does not show Control Box?

- Marko


[mhieta](#)

Developer

Super Mod

Posts: 567

Joined: 15 Oct 2005, 21:53

Location: Lohja, Finland



Re: 5.7 windows 7

 by [pjotr](#) » 05 Apr 2010, 16:58

Hi,

Sorry for not being clear:
The box does appear but nothing in it.
So no controls.

It's a new installation, I don't think another process takes control of ctrl-b. It more like a windows object which isn't working. But then again I'm not a real programmer.

Pjotr

[pjotr](#)

Member

Starting...

Posts: 5

Joined: 04 Apr 2010, 21:57

Re: 5.7 windows 7

 by [mhieta](#) » 05 Apr 2010, 17:14

Hi,

Can you take screen shot? So I can see what is going on. One thing came in to my mind. Are you using some skin application perhaps?.

- Marko



mhieta
Developer

Super Mod

Posts: 567
Joined: 15 Oct 2005, 21:53
Location: Lohja, Finland



Re: 5.7 windows 7

by **pjotr** » 05 Apr 2010, 18:52

Hi,

here is a screenshot.

Thanks!

Pjotr

ATTACHMENTS

[emptybox.zip](#)

(7.92 KiB) Downloaded 239 times

pjotr

Member

Starting...

Posts: 5
Joined: 04 Apr 2010, 21:57



Re: 5.7 windows 7

by **mhieta** » 05 Apr 2010, 19:01

Hi,

hmm. It seems that some skinning/theming system is affecting to that window. Cause it makes all the buttons to transparent.

- Marko



mhieta
Developer

Super Mod

Posts: 567
Joined: 15 Oct 2005, 21:53
Location: Lohja, Finland



Re: 5.7 windows 7

by **mhieta** » 05 Apr 2010, 19:08

Hi,

hmm. It appears to be Display setting.. if its 125 % or 150 % then there is problem. When its 100 % then Control Box buttons is shown correctly.

- Marko



mhieta
Developer

Super Mod

Posts: 567
Joined: 15 Oct 2005, 21:53
Location: Lohja, Finland



Re: 5.7 windows 7

pjotr

by **pjotr** » 05 Apr 2010, 19:14

Ok, that might be a problem, I just bought myself such a nice small netbook, it might do something to the display setting as you described.

I'll go and try to find this setting 😊

Pj

hmm difficult to find.

Or did you mean display setting in wildbit?

Member

Starting...

Posts: 5

Joined: 04 Apr 2010, 21:57

Re: 5.7 windows 7

by **mhiet** » 05 Apr 2010, 19:19

Hi,

You can find that setting -> Right click desktop and select Personalize -> Bottom Left corner Display -> Select 100 % and log off. Then it should work normally.

- Marko



mhiet

Developer

Super Mod

Posts: 567

Joined: 15 Oct 2005, 21:53

Location: Lohja, Finland



Re: 5.7 windows 7

by **pjotr** » 05 Apr 2010, 19:32

Yeah!!!!

Works perfect. You're my hero.

Thanks for your outstanding fast support.

Ciao

Pjotr

pjotr

Member

Starting...

Posts: 5

Joined: 04 Apr 2010, 21:57

Display posts from previous: All posts Sort by Post time Ascending Next »

POSTREPLY ↩

12 posts • Page 1 of 2 • 1 2

Return to Bug Reports

Jump to: Bug Reports

WHO IS ONLINE

Users browsing this forum: No registered users and 1 guest

Board index

The team • Delete all board cookies • All times are UTC

Powered by phpBB® Forum Software © phpBB Group

5.7 windows 7

POSTREPLY ↩

12 posts • Page 2 of 2 • 1 2

Re: 5.7 windows 7

by **mhieta** » 05 Apr 2010, 19:36

Hi,

Great!! 😊 Anyway thanks for reminding me for this issue. I will try to find some solution to this font issue.

- Marko



mhieta
Developer

Super Mod

Posts: 567
Joined: 15 Oct 2005, 21:53
Location: Lohja, Finland



Re: 5.7 windows 7

by **mhieta** » 05 Apr 2010, 20:17

Hi,

It looks like application(s) needs to be carefully planned to be DPI aware... So there is no easy solution for this problem other than using 100 % setting.

- Marko



mhieta
Developer

Super Mod

Posts: 567
Joined: 15 Oct 2005, 21:53
Location: Lohja, Finland



Previous

Display posts from previous: All posts

Sort by Post time

Ascending

POSTREPLY ↩

12 posts • Page 2 of 2 • 1 2

Return to Bug Reports

Jump to: Bug Reports

WHO IS ONLINE

Users browsing this forum: No registered users and 1 guest

File Open/Save bug with v5.6 & later on Windows98SE

POSTREPLY ↩

4 posts • Page 1 of 1

File Open/Save bug with v5.6 & later on Windows98SE

 by [Spiffy](#) » 08 Feb 2010, 00:11

Hi

'File>Open/Save' no longer work with v5.6 & later on Windows 98SE .

Is Windows 9x support being dropped? 🙄

Thanks for a very nice lightweight image viewer. 😊

Spiffy

Spiffy

Member

Starting...

Posts: 1

Joined: 07 Feb 2010, 23:44

Re: File Open/Save bug with v5.6 & later on Windows98SE

 by [mhieta](#) » 08 Feb 2010, 12:36

Hi Spiffy and Welcome,

It seems that latest component update did that, sorry. Open/Save dialogs are working fine in 5.5.

hmm. I need to think this issue more. In the meanwhile you can download 5.5 version (Editor and/or Slide Show):

[here](#)

- Marko


mhieta

Developer

Super Mod

Posts: 567

Joined: 15 Oct 2005, 21:53

Location: Lohja, Finland



Re: File Open/Save bug with v5.6 & later on Windows98SE

 by [mhieta](#) » 09 Feb 2010, 13:07

Hi,

hmm. Also it seems that even MSLU (unicows.dll for Windows 98,ME) is not helping. That dll has not required functions available 🙄

- Marko


mhieta

Developer

Super Mod

Posts: 567

Joined: 15 Oct 2005, 21:53

Location: Lohja, Finland



Re: File Open/Save bug with v5.6 & later on Windows98SE

 by [mhieta](#) » 23 Feb 2010, 17:33

Hi,

This issue is now fixed in 5.7 - Alpha 3.0 version.

- Marko



mhieta
Developer

Super Mod

Posts: 567
Joined: 15 Oct 2005, 21:53
Location: Lohja, Finland



Display posts from previous: **All posts** Sort by **Post time** **Ascending**

POSTREPLY ↩

4 posts • Page 1 of 1

Return to Bug Reports

Jump to: **Bug Reports**

WHO IS ONLINE

Users browsing this forum: No registered users and 1 guest

[Board index](#)

[The team](#) • [Delete all board cookies](#) • All times are UTC

Powered by [phpBB®](#) Forum Software © phpBB Group

Full screen display in dual monitor mode

POSTREPLY ↩

9 posts • Page 1 of 1

Full screen display in dual monitor mode

 by [heronwil](#) » 17 Sep 2009, 00:16

This program is good and I thank you for creating it...

But there is one little thing that is annoying during slide shows:

After each monitor change, the full screen display does not kick in until the second image on the new monitor.

This happens every time there is a monitor change from landscape to portrait or from portrait to landscape.

Monitor 1 is portrait (1024x1280).

Monitor 2 is landscape (1280x1024).

All the images are either 1024x1280 or 1280x1024 so each should fill the appropriate monitor display.

This is what happens:

image 1 (portrait) appears on portrait monitor - shown full screen

image 2 (portrait) appears on portrait monitor - shown full screen

image 3 (portrait) appears on portrait monitor - shown full screen

image 4 (landscape) appears on landscape monitor - NOT shown full screen

image 5 (landscape) appears on landscape monitor - shown full screen

image 6 (portrait) appears on portrait monitor - NOT shown full screen

image 7 (portrait) appears on portrait monitor - shown full screen

and so on.

The size changes are very irritating and spoil what is potentially a useful tool.

heronwil

Member

Starting...

Posts: 4

Joined: 16 Sep 2009, 23:07

Re: Full screen display in dual monitor mode

 by [mhieta](#) » 17 Sep 2009, 01:02


Hi heronwil and Welcome,

Go to Image Change Settings -> and check *Resize Image to Full Screen*. This will resize images to Full Screen size instead of window size.

If its not helping please tell me what options you have checked.

- Marko



mhieta
Developer

Super Mod

Posts: 567
Joined: 15 Oct 2005, 21:53
Location: Lohja, Finland



Re: Full screen display in dual monitor mode

by **heronwil** » 18 Sep 2009, 00:37

Thanks for the quick reply. I tried checking *Resize Image to Full Screen* but it doesn't fix the problem completely. I'll explain what happens in a moment. Just want to say that the images are the same size as the desktop for each mode so they should not need to be resized and most of them appear correctly as full screen. It is only the first image when the display moves from one monitor to the other that appears less than full screen.

Anyway...

With *Resize Image to Full Screen* unchecked, I see the behaviour as described in OP.

With *Resize Image to Full Screen* checked, all images appear as full screen on the landscape (secondary) monitor and all images appear as less than full screen on the portrait (primary) monitor. It looks like the resize on the portrait images is resizing to a height of 1024 when it should be 1280.

Is it possible to check the loop entry/exit for displaying images to see where the variable holding screen height is initiated for a new sequence when the display monitor changes? It appears as if this variable is being reset after the first iteration when *Resize Image to Full Screen* is NOT checked and Full Screen View is the display mode.

all the best,
Don

heronwil
Member

Starting...

Posts: 4
Joined: 16 Sep 2009, 23:07



Re: Full screen display in dual monitor mode

by **mhieta** » 18 Sep 2009, 13:30

Hi Don,

Short summary what Slide Show program tries to do:

- Slide Show loads next image immediately when it displays (transition/effects occurs) current image. And also Slide Show tries to look what size monitor is where Slide Show window is currently.

This will speeds up image loading, but it can cause various problems like this one.

Anyway I may have found one possible fix for this issue. Could you email to me so I can send test version to you.

- Marko



mhieta
Developer

Super Mod

Posts: 567
Joined: 15 Oct 2005, 21:53
Location: Lohja, Finland



Re: Full screen display in dual monitor mode

by **heronwil** » 20 Sep 2009, 04:04

heronwil
Member

Thanks for the test version.

It works properly - you're the best!

Starting...

Posts: 4
Joined: 16 Sep 2009, 23:07

Re: Full screen display in dual monitor mode

by **mhieta** » 20 Sep 2009, 08:54

Hi Don,

Thanks for testing it 😊

- Marko



mhieta
Developer

Super Mod

Posts: 567
Joined: 15 Oct 2005, 21:53
Location: Lohja, Finland



Re: Full screen display in dual monitor mode

by **mhieta** » 21 Sep 2009, 20:26

Hi Don,

Noticed few things in special cases 🙄 So I changed few things. So now Slide Show tries to look that monitor size where it goes when Auto Monitor Switch is enabled and other cases it will try to find "correct size" monitor.

- Marko



mhieta
Developer

Super Mod

Posts: 567
Joined: 15 Oct 2005, 21:53
Location: Lohja, Finland



Re: Full screen display in dual monitor mode

by **heronwil** » 22 Sep 2009, 19:59

Damn those special cases! When you get too many of them, it really is time for a redesign and rewrite... 🇫🇮

heronwil
Member

Starting...

Posts: 4
Joined: 16 Sep 2009, 23:07

Re: Full screen display in dual monitor mode

by **mhieta** » 22 Sep 2009, 20:13

Yep, true. Hopefully its still working in your case 😊

- Marko



mhieta
Developer

Super Mod

Posts: 567
Joined: 15 Oct 2005, 21:53
Location: Lohja, Finland



Display posts from previous: All posts Sort by Post time Ascending

POSTREPLY ↩

9 posts • Page 1 of 1

Zoom-Error with automatic Monitor-Selection

POSTREPLY ↙

5 posts • Page 1 of 1

Zoom-Error with automatic Monitor-Selection

 by [simon](#) » 17 Apr 2009, 15:12

Hi,

i really like the possibility of automatically choosing the right monitor based on portrait/landscape layout. I've got a mixture of formats in my folder, I choose 'Auto Monitor Switch' and it will display my pictures on the right monitor. So far, so good. But it fails to always display it zoomed to the whole screen. After switching, the picture is shown in an incorrect size. If the next picture is shown on the same screen, zooming is fine. If i had to guess i'd say it's implemented this way: First Zoom to Fit, then switch to other monitor.

i hope my explanation helps, and i hope this can be fixed

simon from Germany

simon

Member

Starting...

Posts: 1

Joined: 17 Apr 2009, 14:52

Re: Zoom-Error with automatic Monitor-Selection

 by [mhieta](#) » 17 Apr 2009, 16:47

Hi simon and Welcome,

Well Slide Show firstly loads image and holds it until next transition comes and then displays it. Also when transition comes it will loads another image to memory. About that Auto Monitor Switch. It adds few things in to this loading/displaying like checking image size (width/height)..

Anyway.. You are correct about this issue. It seems that I have few problems with windows taskbar size, sorry. So workaround to this problem is (until I find prober fix), to use:

1. Auto Monitor Swith in Full Screen View or
2. resize Slide Show window to smaller size so that when its switched to other monitor window itself is not resizing.

I will fix this in to next Alpha version. Thanks for reporting this.

- Marko


mhieta

Developer

Super Mod

Posts: 567

Joined: 15 Oct 2005, 21:53

Location: Lohja, Finland



Re: Zoom-Error with automatic Monitor-Selection

 by [mhieta](#) » 17 Apr 2009, 18:52

Hi simon,



Okay. It should be fixed now, but it needs testing. 😊 If you want to test it please email to me.

- Marko

mhieta
Developer

Super Mod

Posts: 567
Joined: 15 Oct 2005, 21:53
Location: Lohja, Finland



Re: Zoom-Error with automatic Monitor-Selection

by **mhieta** » 17 Apr 2009, 19:59

hmm. it fixed that one. But caused another one.. Sorry 😊

- Marko



mhieta
Developer

Super Mod

Posts: 567
Joined: 15 Oct 2005, 21:53
Location: Lohja, Finland



Re: Zoom-Error with automatic Monitor-Selection

by **mhieta** » 18 Apr 2009, 14:29

Hi simon,

Had to create another option: Resize Image to Full Screen.

So basically when this feature is switched on, it will allows to display image in correct size in every ways. But in the same time image loses smoothness, cause it will be resampled to Full Screen. Also this means that Image Info is not looking good in Normal View if this feature is checked.

- Marko



mhieta
Developer

Super Mod

Posts: 567
Joined: 15 Oct 2005, 21:53
Location: Lohja, Finland



Display posts from previous: **All posts** Sort by **Post time** **Ascending**

POSTREPLY ↩

5 posts • Page 1 of 1

Return to Bug Reports

Jump to: **Bug Reports**

WHO IS ONLINE

Users browsing this forum: No registered users and 1 guest

[Board index](#)

[The team](#) • [Delete all board cookies](#) • All times are UTC

Powered by [phpBB®](#) Forum Software © [phpBB Group](#)

Error with Right click context menu with Windows 7

POSTREPLY ↩

10 posts • Page 1 of 1

Error with Right click context menu with Windows 7

by Rich » 10 Mar 2009, 22:55

Hi,

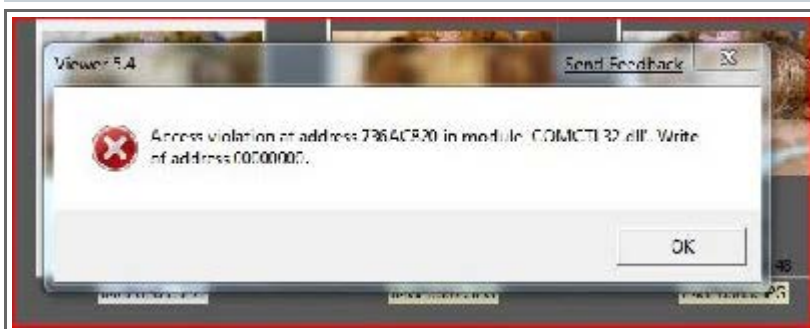
First, a nice piece of image viewing software. Very fast.

I get an error when using the Windows right click context menu. (Attached screenshot) when RC on a thumbnail

Any one else having this? Or seen this?

Viewer 5.4 Beta 1.0

ATTACHMENTS



Rich

Member

Starting...

Posts: 4

Joined: 10 Mar 2009, 22:45

Re: Error with Right click context menu with Windows 7

by mhieta » 11 Mar 2009, 07:10

Hi Rich and Welcome,

hmm. I guess that in Windows 7 common controls (comctl) files has changed a bit since Vista.

I don't have RC version, but I can check this with Beta version.

- Marko



mhieta

Developer

Super Mod

Posts: 567

Joined: 15 Oct 2005, 21:53

Location: Lohja, Finland



Re: Error with Right click context menu with Windows 7

by mhieta » 11 Mar 2009, 07:26

Hi,

One thing came in to my mind could you try to run Viewer in Compatibility Mode:



mhieta

[Windows 7 Application Compatibility Mode](#)

- Marko

Developer

Super Mod

Posts: 567

Joined: 15 Oct 2005, 21:53

Location: Lohja, Finland



Re: Error with Right click context menu with Windows 7

by **Rich** » 11 Mar 2009, 13:30

“ mhieta wrote:

Hi,

One thing came in to my mind could you try to run Viewer in Compatibility Mode:

[Windows 7 Application Compatibility Mode](#)

- Marko

Rich

Member

Starting...

Posts: 4

Joined: 10 Mar 2009, 22:45

Hi Marko,

I tried the compatibility mode when the error first occurred, but it made no difference.



Re: Error with Right click context menu with Windows 7

by **mhieta** » 11 Mar 2009, 15:12

Hi Rich,

huh. Now I can check this Windows 7 problem 😊 Currently I have Build 7000 installed. That right click context menu works okay in this version. What Build do you have? Also have you installed any programs that puts something in to context menu? zip, rar, winamp etc?

- Marko



mhieta

Developer

Super Mod

Posts: 567

Joined: 15 Oct 2005, 21:53

Location: Lohja, Finland



Re: Error with Right click context menu with Windows 7

by **mhieta** » 11 Mar 2009, 21:54

Hi,

Okay I have now also Build 7048 installed and that context menu is not causing any Access Violations. Or maybe you do something different to cause that access violation.

- Marko



mhieta

Developer

Super Mod

Posts: 567

Joined: 15 Oct 2005, 21:53

Location: Lohja, Finland



Re: Error with Right click context menu with Windows 7

by **Rich** » 13 Mar 2009, 01:29

“ mhieta wrote:

Hi,

Rich

Member

Starting...

Posts: 4

Joined: 10 Mar 2009, 22:45

Okay I have now also Build 7048 installed and that context menu is not causing any Access Violations. Or maybe you do something different to cause that access violation.

- Marko

Hi Marko,
Sorry, have been out of town for a few hours.
Over the weekend. I will unload any and all software that is using the conterxt menu, and see if I can isolate the culprit.

Re: Error with Right click context menu with Windows 7

by **mhiet** » 13 Mar 2009, 06:18

Hi Rich,

Btw. There is tool for finding context menu items:

[ShellExView](#)

Hopefully its working under Windows 7 😊

I think that context menu item is related either to image handling or its generic like some zip program.

- Marko



mhiet
Developer

Super Mod

Posts: 567
Joined: 15 Oct 2005, 21:53
Location: Lohja, Finland



Re: Error with Right click context menu with Windows 7

by **Rich** » 13 Mar 2009, 19:10

Hi Marko,
Had time this PM , and I found the culprit.

The Geosetter context menu from <http://www.geosetter.de/en/>
Disable this and no more errors. 😊

Thanks for your patience.

Rich

Member

Starting...

Posts: 4
Joined: 10 Mar 2009, 22:45

Re: Error with Right click context menu with Windows 7

by **mhiet** » 13 Mar 2009, 19:54

Hi Rich,

Great 😊 For finding what is causing that error message. Thanks for reporting this.
Hopefully it will help others as well.

- Marko



mhiet
Developer

Super Mod

Posts: 567
Joined: 15 Oct 2005, 21:53
Location: Lohja, Finland



Display posts from previous: **All posts** Sort by **Post time** **Ascending**

POSTREPLY ↩

10 posts • Page 1 of 1

Return to Bug Reports

Jump to: **Bug Reports**

Windows - No Disk Error message on starting Viewer

POSTREPLY ↩

 21 posts • Page 1 of 3 • [1](#) [2](#) [3](#)

Windows - No Disk Error message on starting Viewer

 by [jeremygharrison](#) » 28 Jan 2008, 00:00

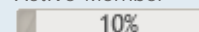
Having just downloaded and installed WildBit Viewer (5.1 Final), whenever I start the Viewer a get a 'Windows - No Disk' error message: "Exception processing c0000013 parameters 75b6bf9c 75b6bf9c 75b6bf9c". On clicking Continue I get into WB Viewer apparently OK and can carry on...

This is on Windows XP SP2.

Probably something silly I've just done (or not done), but please advise, as I'm sure it shouldn't be happening.

[jeremygharrison](#)

Active Member

 10%

Posts: 13

Joined: 27 Jan 2008, 23:46

RE: Windows - No Disk Error message on starting Viewer

 by [mhieta](#) » 28 Jan 2008, 11:45

Hi Jeremy and Welcome,

Please check this:

<http://www.consumingexperience.com/2007/11/windows-no-disk-exception-processing.html>

Its most common problem with some devices it can be card reader,usb stick or something else what you have. Cause not every hardware maker will do standard things, sorry 🙄

- Marko


[mhieta](#)

Developer

Super Mod

Posts: 567

Joined: 15 Oct 2005, 21:53

Location: Lohja, Finland



RE: Windows - No Disk Error message on starting Viewer

 by [jeremygharrison](#) » 28 Jan 2008, 13:26

Marko - thanks for the prompt reply.

But I have only had this message since installing WildBit Viewer, and only get it when I go into the Viewer.

But having looked at the article, I've tried a few things:

Reboot PC - go into Viewer - OK (no msg)

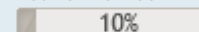
Insert USB drive - go into Viewer - still ok

Stop and remove USB drive - go into Viewer - get message.

If after rebooting, I insert a card into (permanent) card reader, and then eject it, instead of the 'Windows - No Disk' msg, I get a 'Viewer.exe - No Disk' message "There is no disk in the drive. Please insert a drive into drive G:.", after which I have to click 'Continue' twice

[jeremygharrison](#)

Active Member

 10%

Posts: 13

Joined: 27 Jan 2008, 23:46

to proceed.

As stated, I do not have similar problems with any other software that I have tried (at least until i actually accessing the absent device)

Jeremy



RE: Windows - No Disk Error message on starting Viewer

by [mhieta](#) » 28 Jan 2008, 14:57

Hi,

hmm. I have Kingston 1 GB USB stick and also Pretec 1 GB usb stick and both are working with Viewer without any problems.

Also I have two cameras and those are working ok also. One is Olympus Camedia C-3040Zoom and second is Nikon D80.

Have you tried changing drive letters? Cause sometimes some usb sticks are attaching itself wrongly. Don't know why...

- Marko



mhieta
Developer

Super Mod

Posts: 567
Joined: 15 Oct 2005, 21:53
Location: Lohja, Finland



RE: Windows - No Disk Error message on starting Viewer

by [mhieta](#) » 28 Jan 2008, 15:38

Hi,

Check what drive letter is assigned to that card reader if its ex. C-drive. Then you have to change it to something else.

- Marko



mhieta
Developer

Super Mod

Posts: 567
Joined: 15 Oct 2005, 21:53
Location: Lohja, Finland



RE: Windows - No Disk Error message on starting Viewer

by [jeremygharrison](#) » 28 Jan 2008, 18:05

Having tried adding more drives, it reached the stage where I would get the error whenever I started the Viewer (even without removing any), after adding any drives, or even just inserting a floppy into my A drive, after booting. I did try changing drive letter for a USB stick, but it doesn't seem to have made any difference.

My C & D drives are, and always have been, my two fixec hard drives.

Note that there doesn't appear to be any problem using any of these drives: the problem only occurs on starting the Viewer, when (presumably) it goes through some routine to see what drives are available.

jeremygharrison
Active Member

10%

Posts: 13
Joined: 27 Jan 2008, 23:46



RE: Windows - No Disk Error message on starting Viewer

by [mhieta](#) » 28 Jan 2008, 18:30

Hi,

Yes it will check what drives are "available". What usb stick do you have? (ex. Kingston..) and what card reader do you have?



mhieta
Developer

Super Mod

- Marko

Posts: 567
Joined: 15 Oct 2005, 21:53
Location: Lohja, Finland



RE: Windows - No Disk Error message on starting Viewer

by **mhieta** » 28 Jan 2008, 19:49

It seems that the Windows - No Disk error is Windows own message, but that Viewer.exe - No Disk message is Viewer own message.

Anyway. I'm checking this No Disk error -message now.

- Marko



mhieta
Developer

Super Mod

Posts: 567
Joined: 15 Oct 2005, 21:53
Location: Lohja, Finland



RE: Windows - No Disk Error message on starting Viewer

by **jeremygharrison** » 28 Jan 2008, 21:47

I've a variety of USB sticks - including Kingston and others just described as 'USB Flash Disk'. Similarly, card readers are mixed: the built in ones are TEAC'

Jeremy

jeremygharrison
Active Member

10%

Posts: 13
Joined: 27 Jan 2008, 23:46



RE: Windows - No Disk Error message on starting Viewer

by **mhieta** » 29 Jan 2008, 15:08

Okay. I have to look a way to suppress these messages.
I will tell when fix are ready.

- Marko



mhieta
Developer

Super Mod

Posts: 567
Joined: 15 Oct 2005, 21:53
Location: Lohja, Finland



Display posts from previous: **All posts** Sort by **Post time** Ascending **Next** ▾

POSTREPLY ↩

21 posts • Page 1 of 3 • **1** 2 3

▾ [Return to Bug Reports](#)

Jump to: **Bug Reports**

WHO IS ONLINE

Users browsing this forum: No registered users and 1 guest

[Board index](#)

[The team](#) • [Delete all board cookies](#) • All times are UTC

Windows - No Disk Error message on starting Viewer

POSTREPLY ↙

 21 posts • Page 2 of 3 • [1](#) [2](#) [3](#)

RE: Windows - No Disk Error message on starting Viewer

 by [mhieta](#) » 30 Jan 2008, 15:59

Hi,

I think that I have found a fix for this problem now, but it needs testing. I'm including that fix in to 5.2 Alpha 1.0.

Edit:

If you want to test that solution, please email. So I can send that version to you.

- Marko


 mhieta
 Developer

Super Mod

 Posts: 567
 Joined: 15 Oct 2005, 21:53
 Location: Lohja, Finland


RE: Windows - No Disk Error message on starting Viewer

 by [mhieta](#) » 30 Jan 2008, 17:36

Sorry. That was not a proper fix. It needs changes for the component so that might take a while 🙄

- Marko


 mhieta
 Developer

Super Mod

 Posts: 567
 Joined: 15 Oct 2005, 21:53
 Location: Lohja, Finland


RE: Windows - No Disk Error message on starting Viewer

 by [jeremygharrison](#) » 31 Jan 2008, 13:49

Let me know when you have a fix that I can try testing... but having changed the Drive letters of my permanent card readers to towards the end of the alphabet (so USB sticks go first), the problem has certainly diminished, but not gone completely: it would appear to be related to drive order.

Thanks,
 Jeremy

jeremygharrison

Active Member

10%

 Posts: 13
 Joined: 27 Jan 2008, 23:46


RE: Windows - No Disk Error message on starting Viewer

 by [mhieta](#) » 31 Jan 2008, 14:11

hmm. I guess this problem is something to do drive letter for permanent card reader. Please check once more that there is no double drive letter assigned in Disk Management



and also check Device Manager for that card reader if that is putting something weird for drive letter. If you can send some configuration stuff for me I can take a look. Most critical is that you can see drive letter configuration only when you have some card in that card reader.

Yes I will tell when I have something to test.

- Marko

mhieta

Developer

Super Mod

Posts: 567

Joined: 15 Oct 2005, 21:53

Location: Lohja, Finland



RE: Windows - No Disk Error message on starting Viewer

by **mhieta** » 22 Feb 2008, 08:51

Hi,

Finally get my hands on with Hama USB 2.0 Card Reader 19-1.

This is installed as 4 different Removable Disks.

Now I don't know what to test. I'm in work machine. And I have drives:

C: Local drive

D: DVD-RAM Drive

E: Removable Disk

F: Removable Disk

G: Removable Disk

H: Removable Disk

J-Z: Mapped drives (network) 6 of them

With this configuration Viewer starts **without any** No Disk erros. No Windows - No Disk and no Viewer.exe - No Disk errors.

I will test more when I'm back home.

- Marko



mhieta

Developer

Super Mod

Posts: 567

Joined: 15 Oct 2005, 21:53

Location: Lohja, Finland



RE: Windows - No Disk Error message on starting Viewer

by **mhieta** » 22 Feb 2008, 09:08

Update..

With all those above drive letters in use.. I attached usb stick that is now drive I. And still I cannot get any error messages when I start Viewer. Now I removed one drive letter one of the Removable Drives. So I have now F,G,H. Notice E is missing and still Viewer starts without any error messages.

- Marko



mhieta

Developer

Super Mod

Posts: 567

Joined: 15 Oct 2005, 21:53

Location: Lohja, Finland



RE: Windows - No Disk Error message on starting Viewer

by **mhieta** » 22 Feb 2008, 15:32

Okay Now I'm back in home.

Now I have also Sandisk card reader:

[http://www.sandisk.com/Products/Item\(2003\)-SDDRX3-3in1-SanDisk_Extreme_20_USB_Reader.aspx](http://www.sandisk.com/Products/Item(2003)-SDDRX3-3in1-SanDisk_Extreme_20_USB_Reader.aspx)

I have these drive letters now:



mhieta

Developer

Super Mod

Posts: 567

Joined: 15 Oct 2005, 21:53

C-R: Local Disk(s)
S: DVD-RW Drive
T&U: Removable Disk
V: Kingston usb-stick
Also this works properly with Viewer.

One thing I noticed tough.

When you see that Viewer.exe - No Disk error message. Don't click Continue. Click Cancel instead. Then Viewer sees that correctly new situation. Also this Viewer.exe - No Disk error message happens if you take away your memory card without Ejecting it. So please Eject card before taking it out of that card reader.

- Marko

Location: Lohja, Finland



RE: Windows - No Disk Error message on starting Viewer

by [jeremygharrison](#) » 22 Feb 2008, 23:34

My arrangement which gives the error:

C: Local drive

D: DVD/CD-RW drive

- both in built, have never been anything else.

E & H: USB memory sticks

F & G: Card readers - 1 device with two slots ("Combo Card Reader Model No. CR-V6-UCS") - without cards.

- all four of these show as 'Removable Disks' in 'My Computer'

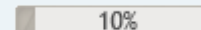
The card reader show in 'Safely Remove Hardware' dialogue as one USB mass storage device, with two USB Card Reader USB devices, each with a generic volume (F & G) - does your Sandisk look similar? As stated, I have not inserted cards into this for a long time. (I originally had the problem on my desktop, which had built in (4 slot) card reader, just above DVD devices). They are using 'standard' Microsoft drivers (came with Windows XP, dated 2001)

Starting computer with just card reader, don't get problem, get problem once I have inserted USB memory stick(s), as long as the card reader remains inserted. Problem manifests itself as 'Windows - No Disk' error message.

Jeremy

[jeremygharrison](#)

Active Member



Posts: 13

Joined: 27 Jan 2008, 23:46

RE: Windows - No Disk Error message on starting Viewer

by [mhieta](#) » 23 Feb 2008, 14:12

Hi,

Yes in Safely Remove Hardware. I will see one USB Mass Storage Device. If I click Stop I get dialog where it lists in this order:

USB Mass Storage Device

Generic volume - (U:)

Generic STORAGE DEVICE USB Device

Generic volume - (T:)

Generic STORAGE DEVICE USB Device

It looks like that you have problem between those USB sticks and that Card reader. They are conflicting each other.



[mhieta](#)

Developer

Super Mod

Posts: 567

Joined: 15 Oct 2005, 21:53

Location: Lohja, Finland



When you see that Windows - No Disk message have you tried click Cancel to see if that helps. Cause in ex. that Viewer.exe - No Disk message goes away when user clicks Cancel instead of that Continue.

- Marko



RE: Windows - No Disk Error message on starting Viewer

by **mhieta** » 25 Feb 2008, 19:13

Hi again,

Good news : Finally I got that same message with empty A-drive. Not used that drive for very very long time.

Sad news : Its in one of the used components. So it might take a while when I receive fix for it. It might be same component issue for card reader also.

- Marko



mhieta
Developer

Super Mod

Posts: 567
Joined: 15 Oct 2005, 21:53
Location: Lohja, Finland



◀ Previous Display posts from previous: All posts Sort by Post time Ascending Next ▶

POSTREPLY ↩

21 posts • Page 2 of 3 • 1 2 3

◀ Return to Bug Reports

Jump to: Bug Reports

WHO IS ONLINE

Users browsing this forum: No registered users and 1 guest

[Board index](#)

[The team](#) • [Delete all board cookies](#) • All times are UTC

Powered by [phpBB®](#) Forum Software © phpBB Group

Windows - No Disk Error message on starting Viewer

POSTREPLY

21 posts • Page 3 of 3 • 1 2 3

RE: Windows - No Disk Error message on starting Viewer

by mhieta » 09 Mar 2008, 15:15

Hi,

Viewer 5.2 - Alpha 3.0 fixes this issue.

If you still get this Windows - No Disk message please try either:

1. Uninstall software, also this will delete registry key+value. **Recommended.**
2. or delete this key+values inside: HKEY_CURRENT_USER\Software\WildBit Viewer\MRU

Note! Modify the registry at your own risk.

- Marko



mhieta
Developer

Super Mod

Posts: 567
Joined: 15 Oct 2005, 21:53
Location: Lohja, Finland



Previous

Display posts from previous: All posts

Sort by Post time

Ascending

POSTREPLY

21 posts • Page 3 of 3 • 1 2 3

Return to Bug Reports

Jump to: Bug Reports

WHO IS ONLINE

Users browsing this forum: No registered users and 1 guest

Multipage-tif frame-navigation not working in Full-Screen view

POSTREPLY ↩

10 posts • Page 1 of 1

Multipage-tif frame-navigation not working in Full-Screen view

 by [oldie](#) » 06 Jan 2008, 19:13

First of all, cograts for this your program. It has some real strong points. Using v5.1 beta 3 under Win XP SP1.

Some bugs I found:

- 1) Multipage-tif frame-navigation cannot be controled from MultiView dialog in Full-Screen modus - the image in viewer doesn't change. However the keyboard-shortcut (up/down) is working.
- 2) MultipageView dialog disappears behind the main window in fullscreen-mode if called from context menu. If called by shortcut then it stays in front.
- 3) "Reset Startup to:" doesn't works although I set it to C:\ - the starting folder is always last viewed folder.

Here some suggestions for handier use which are not feature requests :-)

- a) For toggling from full-screen-view to window-view it would be good to use one single shortcut not two (ctrl+U and ctrl+F).
- b) If double click or RET on thumbnail switches to Viewer, it would be good that same mouse-action or key on the Viewer switches back to thumbnail-view.
- c) It would be useful to adjust background color in thumb-view. White background isn't best for estimating picture-colors.

I'll post you more after using it for a while.

rgds

oldie

oldie

Member

Starting...

Posts: 4

Joined: 06 Jan 2008, 18:12

RE: Multipage-tif frame-navigation not working in Full-Scree

 by [mhieta](#) » 06 Jan 2008, 19:35

Hi oldie and Welcome,

- 1) Okay I look this
- 2) And this also
- 3) Yes that needs little bit more thinking, maybe taking away cause now its little bit hard to get that work properly.

- a) hmm. yes you are right. Maybe Ctrl+F is better for both actions.
- b) There is now Esc-key to close that window maybe double-click is enough for closing window too.
- c) I have been thinking those color adjustments. I will add this in to my ToDo-list.


mhieta

Developer

Super Mod

Posts: 567

Joined: 15 Oct 2005, 21:53

Location: Lohja, Finland



- Marko



RE: Multipage-tif frame-navigation not working in Full-Screen view

by **mhieta** » 06 Jan 2008, 20:47

Hi,

- 1,2) Still working on with these
- 3) Removed, I hope that someone is not missing it.

- a) Done. Ctrl+F does switching between Full Screen View and Normal View.
- b) Done both. Enter and double click closes window. Old ways still there too.

Another Beta is coming soon.

- Marko



mhieta
Developer

Super Mod

Posts: 567
Joined: 15 Oct 2005, 21:53
Location: Lohja, Finland



RE: Multipage-tif frame-navigation not working in Full-Screen view

by **mhieta** » 06 Jan 2008, 21:44

- 1) Fixed. Now controlling pages with clicking or up/down works ok.
- 2) Image gets focus when called from context menu. I have to think this more.

- Marko



mhieta
Developer

Super Mod

Posts: 567
Joined: 15 Oct 2005, 21:53
Location: Lohja, Finland



RE: Multipage-tif frame-navigation not working in Full-Screen view

by **mhieta** » 07 Jan 2008, 15:43

- 2) Fixed. In next Beta if wanted to zoom. Image has to be clicked first cause Focus is in Multipage View (thumbnails/pages). This change applies only when Multipage View is opened.



mhieta
Developer

Super Mod

Posts: 567
Joined: 15 Oct 2005, 21:53
Location: Lohja, Finland



RE: Multipage-tif frame-navigation not working in Full-Screen view

by **oldie** » 07 Jan 2008, 23:50

Dear Marko

I'm really impressed about your fast reaction. Thank you very much. Already downloaded and tested...

Explanation:

I asked for a) & b) because it's more easy to use one hand than two :-), and for 3) because it's a basic "privacy-protection issue" ahem...

Feedback:

to 1) Still not working - sorry. In full-screen mode the UP/DOWN keys are working but the

oldie
Member

Starting...

Posts: 4
Joined: 06 Jan 2008, 18:12

frame-control and page-selection by mouse don't. Maybe its better to keep UP/DOWN for image-browsing and LEFT/RIGHT for multipage frame navigation.
to 2) You are right - there is an issue with the windows focus now, so it is maybe need for some more thinking.
to 3) The viewer still starts in last browsed folder. I found the info is stored in: HKEY_CURRENT_USER\Software\WildBit Viewer\MRU. Maybe adding an option to toggle between checking/ignoring or writing/zeroing this key could solve the problem.
to a) & b) - Fixed. This was big issue for handy working.

Thank you once more.

oldie



RE: Multipage-tif frame-navigation not working in Full-Screen view

by [mhieta](#) » 08 Jan 2008, 06:40

Hi,

- 1) Could you explain this more? If you click pages with mouse does that image change then? Or with Visible Frame << >>?
- 2) Focus goes to Multipage View when opening that then it can be controlled with up down keys.
- 3) Yes it does that. Yes that registry key is right place where that info goes. If I write zero or delete that key then Viewer starts in Root folder (My Computer or My Documents). Depends what root folder option (Documents or Drives) you have selected. Maybe option to ignore this last browsed folder?

- Marko



mhieta
Developer

Super Mod

Posts: 567
Joined: 15 Oct 2005, 21:53
Location: Lohja, Finland



RE: Multipage-tif frame-navigation not working in Full-Screen view

by [mhieta](#) » 08 Jan 2008, 15:00

- 3) hmm. I may have now idea to get that working. :)

- Marko



mhieta
Developer

Super Mod

Posts: 567
Joined: 15 Oct 2005, 21:53
Location: Lohja, Finland



RE: Multipage-tif frame-navigation not working in Full-Screen view

by [mhieta](#) » 08 Jan 2008, 15:57

- 3) Ok I have now added this kind of function in to Options:
 - Starts In To Selected Folder and Starts In To Last Visited Folder. So when that ..Last Visited Folder is checked then it will starts to last position. That other one is saves MRU and when Viewer starts it will start always in to that folder.

- Marko



mhieta
Developer

Super Mod

Posts: 567
Joined: 15 Oct 2005, 21:53
Location: Lohja, Finland



RE: Multipage-tif frame-navigation not working in Full-Screen view

by [mhieta](#) » 14 Jan 2008, 17:25

1 & 2) Had to change Multipage View functionality, sorry.
So now it can be controlled properly when you are in Full Screen. Also this means that when going from Main window to Full Screen window and Multipage View is open I have to close it, sorry.. So if you want to change pages in Multipage View you have to open it again.

- Marko



mhieta
Developer

Super Mod

Posts: 567
Joined: 15 Oct 2005, 21:53
Location: Lohja, Finland



Display posts from previous: All posts Sort by Post time Ascending

POSTREPLY ↩

10 posts • Page 1 of 1

Return to Bug Reports

Jump to: Bug Reports

WHO IS ONLINE

Users browsing this forum: No registered users and 1 guest

[Board index](#)

[The team](#) • [Delete all board cookies](#) • All times are UTC

Powered by [phpBB®](#) Forum Software © phpBB Group

XMP information disappears

POSTREPLY

4 posts • Page 1 of 1

XMP information disappears

by **hcipbs** » 25 Aug 2007, 18:36

XMP information disappears after you change Exif info.

hcipbs

Site Mod

Moderator

Posts: 8

Joined: 15 Oct 2005, 20:44

Location: Forssa



RE: XMP information disappears

by **mhietta** » 25 Aug 2007, 18:37

Will be fixed in next version, RC 1.0.

- Marko



mhietta

Developer

Super Mod

Posts: 567

Joined: 15 Oct 2005, 21:53

Location: Lohja, Finland



RE: XMP information disappears

by **hcipbs** » 27 Aug 2007, 16:15

Verified, Viewer version 5.0 build RC1 fixes the problem.

hcipbs

Site Mod

Moderator

Posts: 8

Joined: 15 Oct 2005, 20:44

Location: Forssa



RE: XMP information disappears

by **mhietta** » 27 Aug 2007, 18:20

Ok, thanks for reporting.

- Marko



mhietta

Developer

Super Mod

Posts: 567

Joined: 15 Oct 2005, 21:53

Location: Lohja, Finland



Display posts from previous: [All posts](#) [Sort by](#) [Post time](#) [Ascending](#)

Rotate direction

POSTREPLY ↙

3 posts • Page 1 of 1

Rotate direction

by **Midstream** » 02 Jul 2007, 16:10

In Editor Rotates are all counter-clockwise (except for Lossless transforms which are clockwise).

Viewer correctly rotates images clockwise in the Preview window although the arrow alongside 90 points to the left making you expect it to rotate that way. :?

Midstream

Beta Tester

Beta Tester

Posts: 35

Joined: 04 Jun 2007, 16:55

Location: Surrey, UK

RE: Rotate direction

by **mhieta** » 02 Jul 2007, 16:46

Yes thats true,sorry. I'll put this in to my ToDo list.



mhieta

Developer

Super Mod

Posts: 567

Joined: 15 Oct 2005, 21:53

Location: Lohja, Finland



RE: Rotate direction

by **mhieta** » 03 Jul 2007, 18:14

Corrected in next Alpha when it comes. :)



mhieta

Developer

Super Mod

Posts: 567

Joined: 15 Oct 2005, 21:53

Location: Lohja, Finland



Display posts from previous: All posts Sort by Post time Ascending

POSTREPLY ↙

3 posts • Page 1 of 1

Return to Bug Reports

Jump to: Bug Reports

WHO IS ONLINE

Start and end of show in 4.9 beta 2.0

POSTREPLY ↩

 23 posts • Page 1 of 3 • [1](#) [2](#) [3](#)

Start and end of show in 4.9 beta 2.0

 by [Midstream](#) » 07 Jun 2007, 16:52

Sorry to say there is a bit more to think about here. I have really been confused trying to test out your Start and End of show features.

Firstly, the order in which Slideshow shows pictures is very odd. This is a list of files in a folder of mine as they might be shown in Viewer pane (alphabetical order).
 Collingwood.jpg, Frimley on the Green.jpg, Maultway.jpg, Motley Bank.jpg, P506971.jpg, P506972.jpg, P506973.jpg, P506973a.jpg, P506974.jpg, P506975.jpg, Surrey.jpg
 Slideshow starts at Maultway.jpg and ends at Collingwood.jpg. I cannot understand the logic it uses.

Secondly, how do you define Start of show?

Case 1. If you open Slideshow from Viewer it starts with a blank screen. Select Auto change and Start show and it moves through the slides forward.

Case 2. Stop somewhere and Browse to and select a new folder. I expected to see either a blank screen or the first slide of the new folder, but in fact the old picture remains.

Now press Auto change and Start show and you may see either the first or the last slide in the new folder depending on whether you had been going forward or back previously. Confusing because there is no visual indication of the current direction.

Your new Go to Start feature works like the confusing Case 2. Perhaps Case 1 would be better.

Midstream

Beta Tester

Beta Tester

Posts: 35

Joined: 04 Jun 2007, 16:55

Location: Surrey, UK

RE: Start and end of show in 4.9 beta 2.0

 by [mhieta](#) » 07 Jun 2007, 17:29

“

Firstly, the order in which Slideshow shows pictures is very odd. This is a list of files in a folder of mine as they might be shown in Viewer pane (alphabetical order).
 Collingwood.jpg, Frimley on the Green.jpg, Maultway.jpg, Motley Bank.jpg, P506971.jpg, P506972.jpg, P506973.jpg, P506973a.jpg, P506974.jpg, P506975.jpg, Surrey.jpg
 Slideshow starts at Maultway.jpg and ends at Collingwood.jpg. I cannot understand the logic it uses.


mhieta

Developer

Super Mod

Posts: 567

Joined: 15 Oct 2005, 21:53

Location: Lohja, Finland



Check what you have in Image Change Settings, Turn changes images one by one (1,2,3 and so on), Random changes Randomly images, it randomizes next image or if you are going backwards previous image (only checks if next/previous image is same as current if it is then it randomizes again and so on until it comes "new" image) So you might get something like 1,2,1,2,3,4,3,4 and so on. Shuffle, shuffles whole list so ex. you have 5



images then order might be 4,3,2,5,1
So in your case select Turn option.

Case 1. yes it will show you blank page if you don't have Auto Start Show checked.

Case 2. Oh well I have bug there. Its not resetting when you change folder. 😞, sorry.
There is visual indication, check Next Image text in upper right corner. It will changes to Previous image when it goes to backwards. That Go So Start works resets image order to first image. So when going onwards then you see first image when you Start Show, but when direction is backwards then you will see Last Image first cause that is first image in that way.

But I will check that blank screen problem and also that reset problem with Browse.



RE: Start and end of show in 4.9 beta 2.0

by **mhjeta** » 07 Jun 2007, 18:06

Ok now I have fixed that resetting problem. So that might clear some "confusing points".



mhjeta
Developer

Super Mod

Posts: 567
Joined: 15 Oct 2005, 21:53
Location: Lohja, Finland



RE: Start and end of show in 4.9 beta 2.0

by **Midstream** » 07 Jun 2007, 19:04

“

Check what you have in Image Change Settings, Turn changes images one by one (1,2,3 and so on), Random changes Randomly images, it randomizes next image or if you are going backwards previous image (only checks if next/previous image is same as current if it is then it randomizes again and so on until it comes "new" image) So you might get something like 1,2,1,2,3,4,3,4 and so on. Shuffle, shuffles whole list so ex. you have 5 images then order might be 4,3,2,5,1 😊
So in your case select Turn option.

I definitely have the Turn option set in Image Change. The order of display is consistent. It is always Maultway.jpg, P506972.jpg, P506973.jpg, P506974.jpg, P506975.jpg, Motley Bank.jpg, Surrey.jpg, P506971.jpg, P506973a.jpg, Frimley on the green.jpg, Collingwood.jpg . I cannot relate that order to size or date or anything else.



Midstream
Beta Tester

Beta Tester

Posts: 35
Joined: 04 Jun 2007, 16:55
Location: Surrey, UK

RE: Start and end of show in 4.9 beta 2.0

by **mhjeta** » 07 Jun 2007, 19:34

Slide Show shows that order as same way as Windows Search, alphabetical order (try to search that same dir with *.jpg). But Viewer uses Explorer way to show file order.

If you want specific order then use Custom Show.

Btw. tomorrow comes next Beta :), hopefully.

- Marko



mhjeta
Developer

Super Mod

Posts: 567
Joined: 15 Oct 2005, 21:53

Location: Lohja, Finland



RE: Start and end of show in 4.9 beta 2.0

by **Midstream** » 08 Jun 2007, 11:31

Midstream

Beta Tester

Beta Tester

Posts: 35

Joined: 04 Jun 2007, 16:55

Location: Surrey, UK

“

That Go So Start works resets image order to first image. So when going onwards then you see first image when you Start Show, but when direction is backwards then you will see Last Image first cause that is first image in that way.

But I will check that blank screen problem and also that reset problem with Browse.

I do find that confusing. Would it not be better instead of using Control-H to use the Home and End buttons. Home would Stop show, display first slide in folder and set direction to forwards. End would Stop show, display last slide in folder and set direction to backwards.



RE: Start and end of show in 4.9 beta 2.0

by **mhieta** » 08 Jun 2007, 15:04

Hi,

Here what I have changed so far+that resetting problem.
Control+H changed to Home/End. That Home and End depends what direction you have. So if you go bakwards then Back To Start is End shortcut and when you forwards then Back To Start is Home. Is this confusing? :)

Those previous and next image toolbar buttons framed with black color. So user sees frame what direction is currently used.

- Marko



mhieta

Developer

Super Mod

Posts: 567

Joined: 15 Oct 2005, 21:53

Location: Lohja, Finland



RE: Start and end of show in 4.9 beta 2.0

by **mhieta** » 08 Jun 2007, 15:08

And also text changes Back To Start <-> Back To End



mhieta

Developer

Super Mod

Posts: 567

Joined: 15 Oct 2005, 21:53

Location: Lohja, Finland



RE: Start and end of show in 4.9 beta 2.0

by **Midstream** » 08 Jun 2007, 17:02

Midstream

Beta Tester

Beta Tester

Posts: 35

Joined: 04 Jun 2007, 16:55

Location: Surrey, UK

“

That Home and End depends what direction you have. So if you go bakwards then Back To Start is End shortcut and when you forwards then Back To Start is Home. Is this

confusing? 😊

Sorry, but to me it is. I have never actually wanted to run a whole slideshow backwards, so the concept of start and end changing places seems rather odd. Start to me always means the first slide of the show and that is always the first file in the list or folder. The only times I want to go backwards is if someone asks a question about a previous slide or I remember something I forgot to say about it. Then I would stop the show and step backwards manually. With this program I have to remember to step forward at least once before restarting the show or it starts up again running backwards. Clearly you see people using it in other ways and of course you must cater for them too.

RE: Start and end of show in 4.9 beta 2.0

by **mhieta** » 08 Jun 2007, 18:17

Yes thats true I have to care everyones needs. I remember that someone asked that.. going backwards so I made it.
Yes thats true normally that going backwards is something like that as you said. But as done this way... Originally there wasn't any way to go backwards.
There is only one thing left that I must do before Beta 3.0.



mhieta
Developer

Super Mod

Posts: 567
Joined: 15 Oct 2005, 21:53
Location: Lohja, Finland



Display posts from previous: **All posts** Sort by **Post time** **Ascending** **Next** ▾

POSTREPLY ↩

23 posts • Page 1 of 3 • **1** 2 3

▾ [Return to Bug Reports](#)

Jump to: **Bug Reports**

WHO IS ONLINE

Users browsing this forum: No registered users and 1 guest

[Board index](#)

[The team](#) • [Delete all board cookies](#) • All times are UTC

Powered by [phpBB®](#) Forum Software © phpBB Group

Start and end of show in 4.9 beta 2.0

POSTREPLY ↩

 23 posts • Page 2 of 3 • [1](#) [2](#) [3](#)

RE: Start and end of show in 4.9 beta 2.0

 by [mhieta](#) » 08 Jun 2007, 18:40

Back to original plan sorry to confuse you more, but now its Back To Start and shortcut is Home. I realized that other way is too confusing to end user.


 mhieta
 Developer

Super Mod

 Posts: 567
 Joined: 15 Oct 2005, 21:53
 Location: Lohja, Finland


RE: Start and end of show in 4.9 beta 2.0

 by [Midstream](#) » 08 Jun 2007, 20:39

What things are called when playing backwards is only an issue with me because I keep selecting reverse by accident. The real problem is that the << and >> keys do too many things - they step forward or back, reverse direction of play and start/restart the show. I think that the reverse play function should really be part of the Image change settings. So there would be 4 play choices there - Forward, Reverse, Random or Shuffle. Then the << and >> keys can just be used for step forward/step back and only the Start Show button actually starts the show.

 Midstream
 Beta Tester

Beta Tester

 Posts: 35
 Joined: 04 Jun 2007, 16:55
 Location: Surrey, UK


RE: Start and end of show in 4.9 beta 2.0

 by [mhieta](#) » 08 Jun 2007, 22:45

hmm. I have to think about it.


 mhieta
 Developer

Super Mod

 Posts: 567
 Joined: 15 Oct 2005, 21:53
 Location: Lohja, Finland


RE: Start and end of show in 4.9 beta 2.0

 by [mhieta](#) » 08 Jun 2007, 23:07

What about if I put checkbox: Allow to Change Direction ?
 So if that is not enabled then it will not change direction "permanently".



Easier to me this way... 😊 maybe

mhieta

Developer

Super Mod

Posts: 567

Joined: 15 Oct 2005, 21:53

Location: Lohja, Finland



RE: Start and end of show in 4.9 beta 2.0

by **mhieta** » 08 Jun 2007, 23:30

Okay, Allow Direction Change checkbox is there. Default is enabled. So when its disabled then Direction Change is not permanent action. What do you think about this?

- Marko



mhieta

Developer

Super Mod

Posts: 567

Joined: 15 Oct 2005, 21:53

Location: Lohja, Finland



RE: Start and end of show in 4.9 beta 2.0

by **Midstream** » 09 Jun 2007, 14:52

Well, I will look at it in Beta 3.0 but I suspect you may be digging the hole even deeper.

Midstream

Beta Tester

Beta Tester

Posts: 35

Joined: 04 Jun 2007, 16:55

Location: Surrey, UK



RE: Start and end of show in 4.9 beta 2.0

by **mhieta** » 09 Jun 2007, 15:00

I guess that you have missed Beta 3.0. That Allow Direction Change is going to be in Beta 4.0. But, please check that Beta 3.0 firstly or if you want I can send this pre Beta 4.0 to you via email so you can test it before release.

- Marko



mhieta

Developer

Super Mod

Posts: 567

Joined: 15 Oct 2005, 21:53

Location: Lohja, Finland



RE: Start and end of show in 4.9 beta 2.0

by **mhieta** » 09 Jun 2007, 16:11

hmm. that change leads to another bug. So I have to fix that firstly.

- Marko



mhieta

Developer

Super Mod

Posts: 567

Joined: 15 Oct 2005, 21:53

Location: Lohja, Finland



RE: Start and end of show in 4.9 beta 2.0

by [mhieta](#) » 09 Jun 2007, 19:08

Little update... When that Allow Direction Change is unchecked .. when you want to see previous image it displays that, but continues then displaying next image. So this way that "unwanted" going backwards is avoided.

- Marko



mhieta
Developer

Super Mod

Posts: 567
Joined: 15 Oct 2005, 21:53
Location: Lohja, Finland



RE: Start and end of show in 4.9 beta 2.0

by [Midstream](#) » 10 Jun 2007, 14:36

Thanks Marko. The changes in beta 3.0 are quite useful and I am happy to wait for 4.0. I still have problems with the order of the images in the show but they are, as you say, in the same order as for a Windows search. The difficulty is that in Win98 and Win2000, the search order is not very logical (not alphabetical). For now however I will use custom show and leave you to work on other people's problems. 😊

Midstream
Beta Tester

Beta Tester

Posts: 35
Joined: 04 Jun 2007, 16:55
Location: Surrey, UK



◀ Previous Display posts from previous: All posts Sort by Post time Ascending Next ▶

POSTREPLY ↩

23 posts • Page 2 of 3 • 1 2 3

◀ Return to Bug Reports

Jump to: Bug Reports

WHO IS ONLINE

Users browsing this forum: No registered users and 1 guest

[Board index](#)

[The team](#) • [Delete all board cookies](#) • All times are UTC

Powered by [phpBB®](#) Forum Software © phpBB Group


Start and end of show in 4.9 beta 2.0

[POSTREPLY](#)

 23 posts • Page 3 of 3 • [1](#) [2](#) [3](#)

RE: Start and end of show in 4.9 beta 2.0

 by [mhieta](#) » 10 Jun 2007, 15:16

Oh you are using still Win98, support is over and you are not getting updates anymore 

Btw. About that Allow Direction Change is working now so you will see that in Beta 4.0.



mhieta
Developer

Super Mod

Posts: 567
Joined: 15 Oct 2005, 21:53
Location: Lohja, Finland



RE: Start and end of show in 4.9 beta 2.0

 by [Midstream](#) » 12 Jun 2007, 15:05

I have Win98SE, Win2K and Vista on different machines. One reason that Wildbit Viewer is attractive is that it runs on all three. In fact since MS updates stopped, and I changed to Firefox and Thunderbird, Win98 has become much more stable and runs better than ever. While there is still software to run on it, Win98 lives on here. :thmbup

Midstream
Beta Tester

Beta Tester


Posts: 35
Joined: 04 Jun 2007, 16:55
Location: Surrey, UK



RE: Start and end of show in 4.9 beta 2.0

 by [mhieta](#) » 12 Jun 2007, 15:22

Yes thats true that Win98 is stable. I can see that some visitors uses Win98 and WinME, but Vista is not so common yet.

Also Win2k users are few..  Don't know yet but "maybe" in the future Win98 and WinME support have to be dropped..

- Marko



mhieta
Developer

Super Mod

Posts: 567
Joined: 15 Oct 2005, 21:53
Location: Lohja, Finland


[Previous](#)

 Display posts from previous: [All posts](#)

 Sort by [Post time](#)

 Ascending
[POSTREPLY](#)

 23 posts • Page 3 of 3 • [1](#) [2](#) [3](#)
[Return to Bug Reports](#)

 Jump to: [Bug Reports](#)

WHO IS ONLINE

Users browsing this forum: No registered users and 1 guest

Start and end of show in 4.9 beta 2.0

POSTREPLY ↩

23 posts • Page 3 of 3 • 1 2 3

RE: Start and end of show in 4.9 beta 2.0

by **mhiet** » 10 Jun 2007, 15:16

Oh you are using still Win98, support is over and you are not getting updates anymore 🙄

Btw. About that Allow Direction Change is working now so you will see that in Beta 4.0.



mhiet
Developer

Super Mod

Posts: 567
Joined: 15 Oct 2005, 21:53
Location: Lohja, Finland



RE: Start and end of show in 4.9 beta 2.0

by **Midstream** » 12 Jun 2007, 15:05

I have Win98SE, Win2K and Vista on different machines. One reason that Wildbit Viewer is attractive is that it runs on all three. In fact since MS updates stopped, and I changed to Firefox and Thunderbird, Win98 has become much more stable and runs better than ever. While there is still software to run on it, Win98 lives on here. :thmbup

Midstream
Beta Tester

Beta Tester

Posts: 35
Joined: 04 Jun 2007, 16:55
Location: Surrey, UK



RE: Start and end of show in 4.9 beta 2.0

by **mhiet** » 12 Jun 2007, 15:22

Yes thats true that Win98 is stable. I can see that some visitors uses Win98 and WinME, but Vista is not so common yet.

Also Win2k users are few.. 😊 Don't know yet but "maybe" in the future Win98 and WinME support have to be dropped..

- Marko



mhiet
Developer

Super Mod

Posts: 567
Joined: 15 Oct 2005, 21:53
Location: Lohja, Finland



Previous

Display posts from previous: All posts

Sort by Post time

Ascending

POSTREPLY ↩

23 posts • Page 3 of 3 • 1 2 3

Return to Bug Reports

Jump to: Bug Reports

WHO IS ONLINE

Users browsing this forum: No registered users and 1 guest

Shortcut icon

POSTREPLY ↩

5 posts • Page 1 of 1

Shortcut icon

 by [Midstream](#) » 06 Jun 2007, 19:24

A minor one. When you install a new version of Viewer over the previous one, the old shortcut icon is left on the desktop as well as the new one.

Midstream

Beta Tester

Beta Tester

Posts: 35

Joined: 04 Jun 2007, 16:55

Location: Surrey, UK



RE: Shortcut icon

 by [mhieta](#) » 07 Jun 2007, 05:19

Ok, hmm. I have to look at it.


mhieta

Developer

Super Mod

Posts: 567

Joined: 15 Oct 2005, 21:53

Location: Lohja, Finland



RE: Shortcut icon

 by [mhieta](#) » 07 Jun 2007, 07:50

Btw are you updating from 4.8 or below? Cause that leads to "dublicate" icons currently.


mhieta

Developer

Super Mod

Posts: 567

Joined: 15 Oct 2005, 21:53

Location: Lohja, Finland



RE: Shortcut icon

 by [Midstream](#) » 07 Jun 2007, 13:06


Yes, it was 4.8 and I see the new Beta is 4.9

Should I have uninstalled 4.8 before installing one with a new version number (even for a change in just the decimal part of the number)?

Midstream

Beta Tester

Beta Tester

Posts: 35

Joined: 04 Jun 2007, 16:55

Location: Surrey, UK



RE: Shortcut icon

by [mhieta](#) » 07 Jun 2007, 14:16

Yes thats true. You have to uninstall previous version first.
But if you upgrade ex. 4.9 Beta 1.0 to Beta 2.0 or Final then you can install top of it.

hmm. I have to think more this installer. 🤔

- Marko



mhieta
Developer

Super Mod

Posts: 567
Joined: 15 Oct 2005, 21:53
Location: Lohja, Finland



Display posts from previous: All posts Sort by Post time Ascending

POSTREPLY ↩

5 posts • Page 1 of 1

Return to Bug Reports

Jump to: Bug Reports

WHO IS ONLINE

Users browsing this forum: No registered users and 1 guest

[Board index](#)

[The team](#) • [Delete all board cookies](#) • All times are UTC

Powered by [phpBB®](#) Forum Software © phpBB Group

Editor - No tooltips

[POSTREPLY](#)

3 posts • Page 1 of 1

Editor - No tooltips

 by [hcipbs](#) » 19 Dec 2006, 16:55

When you paste new image from clipboard or capture image, status bar text is not shown for tools in toolbar.

[hcipbs](#)

Site Mod

Moderator

Posts: 8

Joined: 15 Oct 2005, 20:44

Location: Forssa



RE: Editor - No tooltips

 by [mhieta](#) » 19 Dec 2006, 18:44

Ok thanks. Bug is there. It will be fixed in next Alpha version.


[mhieta](#)

Developer

Super Mod

Posts: 567

Joined: 15 Oct 2005, 21:53

Location: Lohja, Finland



RE: Editor - No tooltips

 by [mhieta](#) » 05 Jan 2007, 15:04

Fixed in 4.8 Alpha 1.0 😊


[mhieta](#)

Developer

Super Mod

Posts: 567

Joined: 15 Oct 2005, 21:53

Location: Lohja, Finland


 Display posts from previous: [All posts](#) Sort by [Post time](#) [Ascending](#)
[POSTREPLY](#)

3 posts • Page 1 of 1

[Return to Bug Reports](#)

 Jump to: [Bug Reports](#)

WHO IS ONLINE

Users browsing this forum: No registered users and 1 guest